

# EUROPEANA ARCHAEOLOGY

Europeana Archaeology (February 2019 - July 2020)  
is a Project funded by the European Commission within  
the Programme Connecting Europe Facility: Telecom.



Jaen (Spain), Iberian oppidum of Puente Tablas , Instituto de Arqueología Ibérica-Universidad de Jaén ph. Alberto Sanchez, CC-BY.

EUROPE'S RICH HERITAGE OF ARCHAEOLOGICAL  
MONUMENTS, HISTORIC BUILDINGS, CULTURAL  
LANDSCAPES AND ARTEFACTS IN EUROPEANA

#### Contacts

Website: <https://europeanaarchaeology.carare.eu>

E-mail: [archaeology@carare.eu](mailto:archaeology@carare.eu)

## AIMS

- Showcasing Europe's rich archaeological Heritage
- Making high-quality digital content available for re-use via Europeana
- Improving discovery of archaeological content through the use of multilingual linked open data and geo-data
- Providing a set of digital services and support to Europeana aggregators and content providers



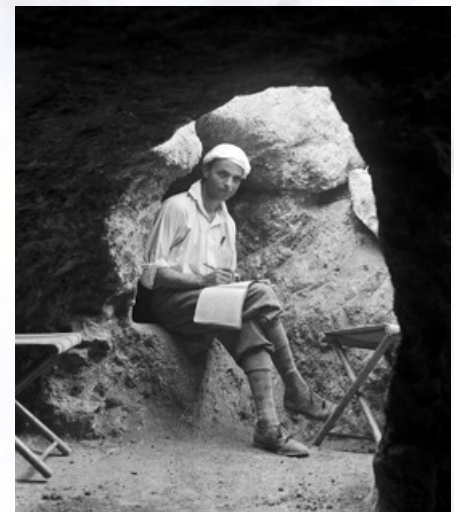
Skuodo (Lithuania), *The Krakly stone Stabakūlis*, Aruodai, ph. by Vykintas Vaitkevičius, CC-BY

## PARTNERS

Vilnius University (LT), coordinator  
2Culture Associates (UK)  
Università di Bologna (IT)  
Athena Research Centre (GR)  
Data Archiving and Networked Services (NL)  
Georg August Universitaet Göttingen (DE)  
Institutul Național al Patrimoniului (RO)  
Istituto Centrale per il Catalogo Unico (IT)  
Koninklijke Musea voor Kunst en Geschiedenis (BE)  
Lunida (SI)  
Musée d'Archéologie nationale (FR)  
Muzej za umjetnost i obrt (HR)  
Stiftung Preussischer Kulturbesitz (DE)  
Technologiko Panepistimio Kyprou (CY)  
The Hunt Museum (IE)  
Universidad de Jaén (ES)

## ASSOCIATES

CARARE (IE)  
MUSEU (BE)



Laphitos (Cyprus), *Erik Sjögqvist inside the tombs 306*, Sweden expedition in Cyprus, Medelhavsmuseet, ph. John Lindros, CCO



Pompei (Italy), *Relief of a Pompeian painting*, Charles Garnier, Bibliothèque de l'INHA, PD Mark

