



---

# CARARE training workshop

Kate Fernie, 2Culture Associates  
Dimitris Gavrillis, Athena Research Centre



# Welcome

CARARE is a network of archaeological and architectural heritage archives from across Europe. We began life as a project to make our digital content available to Europeana and to the public.



# CARARE member network

Includes:

- National heritage agencies for Denmark, Malta, Poland, Czech Republic, the Netherlands, Brussels, Slovenia, Slovakia, Iceland.
- Archives such as ADS, DANS, the German Archaeological Institute, Bulgarian Academy of Science
- Universities in Vilniaus and Jaen
- Specialists such as the Discovery Programme, Visual Dimension

Open to include new associates!



# Archaeological and architectural data

- CARARE's partners hold databases, GIS and collections of images, maps, plans and 3D models
- The CARARE project provided an opportunity to improve public access to these online both at home and internationally via Europeana

For example, the Polish national heritage agency portal

The screenshot displays the website of the National Heritage Board of Poland (Narodowy Instytut Dziedzictwa). The header includes the logo 'PORTAL E-ZABYTEK' and the text 'NARODOWY INSTYTUT DZIEDZICTWA NATIONAL HERITAGE BOARD OF POLAND'. A search bar is visible on the right. The main navigation menu contains links for 'STRONA GŁÓWNA', 'NOWOŚCI', 'O PORTALU', 'PRZEWODNIK', 'KALENDARIUM', 'SŁUŻBY KONSERWATORSKIE', 'REGULAMIN', and 'KONTAKT'. The page content is titled 'Portal e-zabytek > Zabytek' and features the heading 'Informacja o zabytku' followed by 'Łęknica - Park Mużakowski'. A large photograph shows a stone monument in a park. To the right, a sidebar titled 'OGÓLNE INFORMACJE' provides details: 'Typ zabytku: PH', 'Chronologia: XIX w.', 'Forma ochrony: pomnik historii', and 'Lokalizacja:'. A map shows the location in Łęknica. At the bottom, a row of small images shows various views of the monument. The footer of the sidebar states 'Właściciel praw autorskich: domena publiczna'.



- Added 2 million items to Europeana (images, maps, photos, drawings, paintings, texts, 3D models and inventories of monuments and buildings)
- Established an aggregation service (MINT and MORE)
- Enabled partners to develop their own systems and content



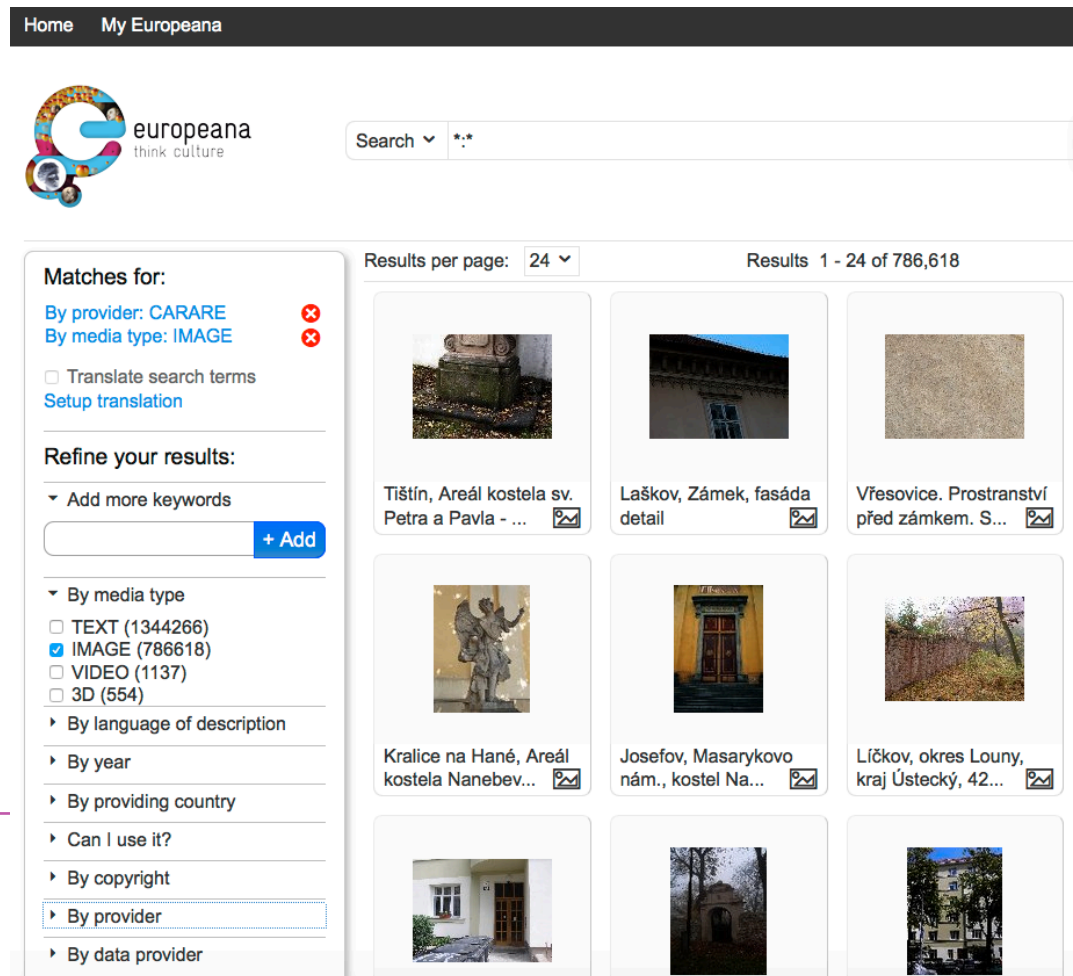
## 2013 to present

- The network has continued to be active through projects such as 3D ICONS, LoCloud and now the Europeana DSI
- We've added new archaeological and architectural content to Europeana
- The project funding allowed continuing development of the tools and the metadata schema (more of this later in the workshop)



# CARARE content in Europeana

- CARARE content is available in the Europeana portal and via the Europeana API
- During this workshop we will talk about how to get the best results from your data



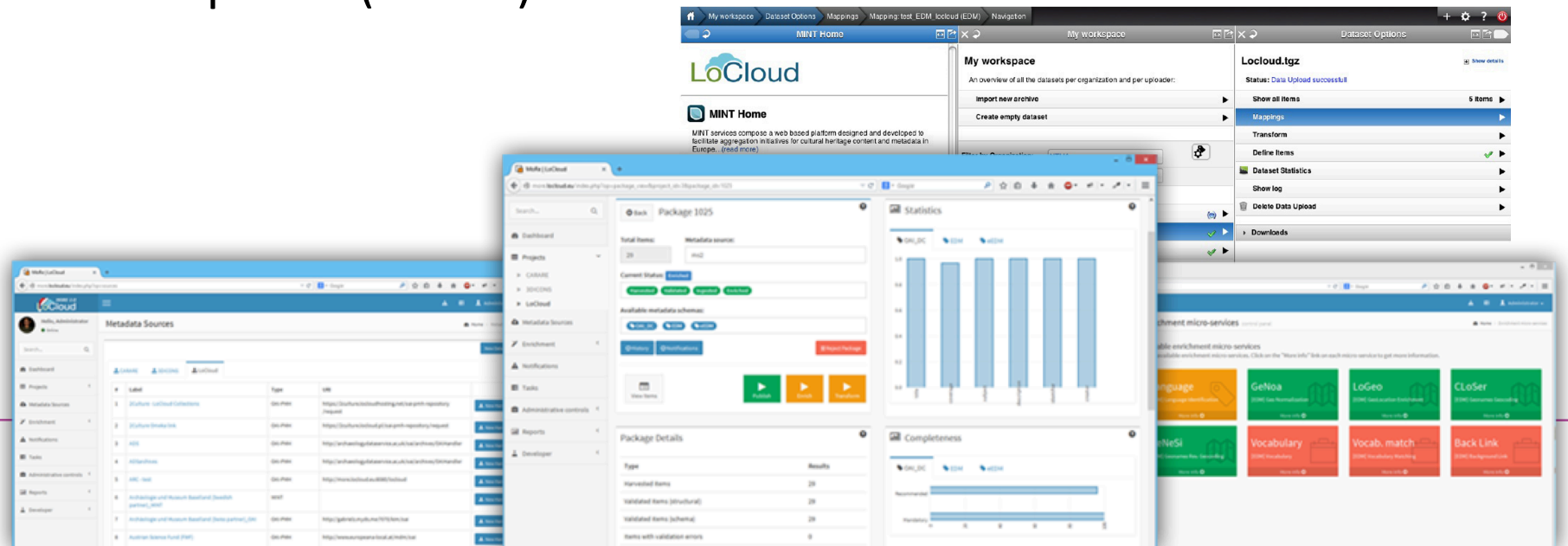
The screenshot shows the Europeana search interface. At the top, there are navigation links for 'Home' and 'My Europeana'. The Europeana logo, 'think culture', is on the left. A search bar contains the text 'Search \*:\*'. Below the search bar, the results are displayed in a grid. On the left side, there are filters for 'Matches for:' and 'Refine your results:'. The 'Matches for:' section shows 'By provider: CARARE' and 'By media type: IMAGE'. The 'Refine your results:' section has a search box and a '+ Add' button. Below this, there are several filter categories: 'By media type' (with 'IMAGE (786618)' selected), 'By language of description', 'By year', 'By providing country', 'Can I use it?', 'By copyright', 'By provider', and 'By data provider'. The main results area shows a grid of 9 image thumbnails, each with a caption and a download icon. The captions are: 'Tištín, Areál kostela sv. Petra a Pavla - ...', 'Laškov, Zámek, fasáda detail', 'Vřesovice. Prostranství před zámekem. S...', 'Kralice na Hané, Areál kostela Nanebev...', 'Josefov, Masarykovo nám., kostel Na...', 'Líčkov, okres Louny, kraj Ústecký, 42...', and three more partially visible.



# CARARE aggregation services

There are three main elements:

- A metadata schema to support harvesting
- A metadata mapping and ingestion service (MINT)
- A metadata repository and service to support harvesting by Europeana (MORe)





## The Europeana Licencing Framework:

- Places metadata under an open licence
- Stresses the importance of having correct copyright statements and licences for content items
- We will go into this in more detail in the workshop because clear copyright labelling is very important for users



# Acknowledgements

- We are delivering this training workshop thanks for funding from the European Commission for the Europeana DSI project
- CARARE is one of a group of domain aggregators who are being funded to help to continue to deliver services for their community

[www.carare.eu](http://www.carare.eu)

[www.europeana.eu](http://www.europeana.eu)



européana  
think culture

# Programme – 7<sup>th</sup> December

- 9.30 Welcome
- 10.00 Introduction to metadata mapping in MINT
- 11.15 CARARE metadata schema and EDM
- 11.45 Metadata mapping, quality issues
- 12.30 Lunch
- 14.00 Introduction to MORE
- 15.00 Metadata enrichment, quality issues
- 15.45 Publishing in Europeana – data quality issues
- 16.15 IPR
  
- 19.00 Dinner!



# Programme – 8<sup>th</sup> December

- 9.00 Welcome
- 9.15 Hands on metadata mapping in MINT
- 11.00 Break
- 11.15 Hands on metadata mapping in MORE
- 12.30 Lunch
- 14.00 Surgeries – time to ask specific questions
- 15.30 Publishing in Europeana, the future
- 16.00 Discussion
  
- 16.30 Close



---

Thanks for your attention

